

MASS TIMBER GROUP

S U M M I T



Denver, Colorado
Denver Art Museum
Aug | 20-21-22 | 2025
www.masstimber.group

2025
SPONSOR
PROGRAM



MASS TIMBER GROUP

S U M M I T

WHY SPONSOR THE SUMMIT?

"The connections we made and the exposure will be invaluable to us."

- Chris Hamm, PE | Timber Age Systems



1. LEAD GENERATION

Engage directly with AEC & Developer teams looking for their next Mass Timber project partners.

2. QUALIFIED ATTENDEES

Get in front of *hundreds* of highly qualified decision makers and business leaders.

3. VISIBILITY

Stay top-of-mind with future clients in rapidly growing markets.

4. STAY CONNECTED

Strengthen your relationships with peer groups and industry leaders.

5. NETWORKING

Find new partners & clients in world-class business networking events

6. MARKET INSIGHTS

Keep up with cutting edge research and market trends in the rapidly evolving Mass Timber industry.



"MTG is a leading advocacy group for the mass timber sector. They have an established network of industry experts, educational resources and suppliers that help share insight, data and experiences to others. Working with them is a pleasure, 10/10 recommend!"

- Jake Howe | Cornerstone Timberframes



MASS TIMBER GROUP
S U M M I T



**Continuous exposure
increases awareness
with industry peers
and future clients**

**2024 MTG
SUMMIT PICS**



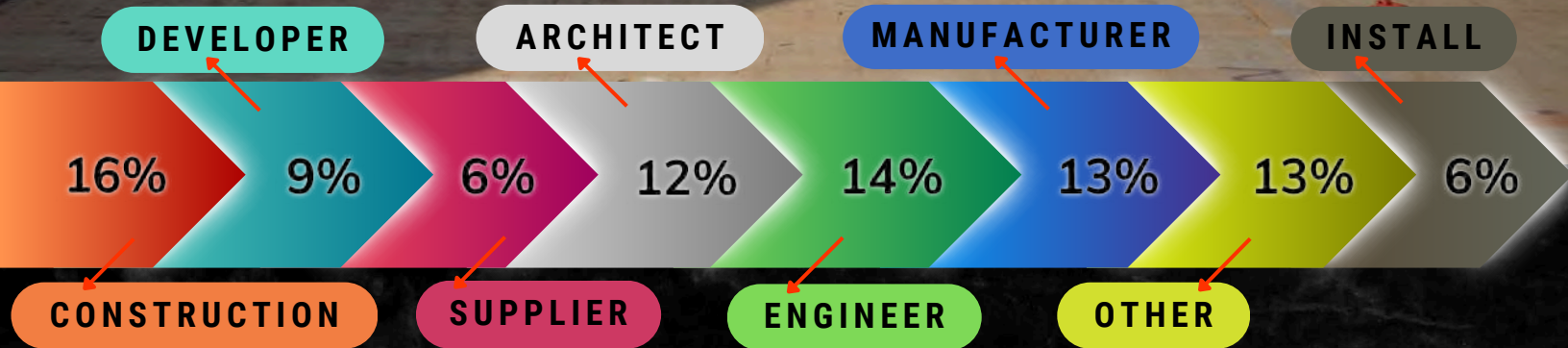


MASS TIMBER GROUP
S U M M I T

2024 SUMMIT DEMOGRAPHICS

45% of Attendees are Decision Makers

9% | CXO/Owner
13% | Principal/VP
23% | Director/Senior +



37
Speakers

24
Exhibitors

262
Attendees

10,000+
Online
Community

7,000+
Annual
Website
Visits

3
Networking
Events

124%
Annual
Growth



MASS TIMBER GROUP
SUMMIT

2024 PARTNERS



Colorado
Mass Timber
Coalition



SHIGERU BAN ARCHITECTS
坂茂建築設計



rothoblaas



CONSTRUCTION



Western Archib



ONE LINE STUDIO



Farrow



MASS TIMBER GROUP
S U M M I T

EXHIBITORS

**TURN NEW HANDSHAKES
INTO MORE CUSTOMERS**

**MEET HUNDREDS OF QUALIFIED
AEC & DEVELOPER TEAMS**





MASS TIMBER GROUP
S U M M I T

EXHIBITOR HALL

29 SPOTS

**10+ HOURS OF
EXHIBITOR TIME**

THURSDAY & FRIDAY

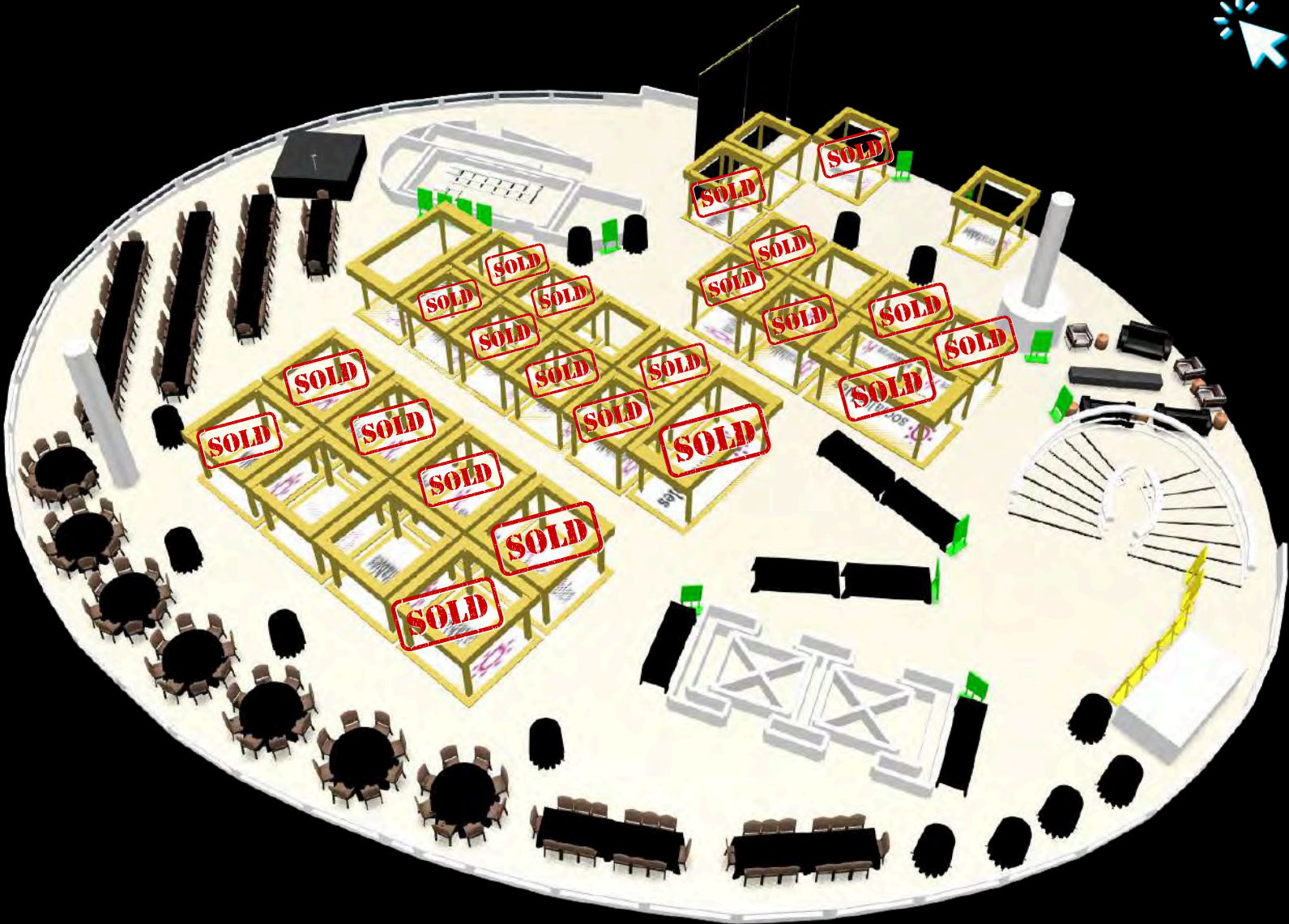
- ✓ Day 2 Networking Mixer
- ✓ All-Day Coffee Stations
- ✓ Morning Breaks
- ✓ Lunch Breaks
- ✓ Afternoon Breaks

3	8' x 16'	N/A
8	10' x 10'	\$5,250
18	8' x 8'	\$4,750

Includes 2 All-Access Summit Passes

*8' X 16' Exhibit Spaces reserved for
Mass Timber Titan & Carbon
Champion Sponsors.*

[Interactive 3D Tour](#)





MASS TIMBER GROUP
S U M M I T

MAIN EVENT SPONSORS

**HIGHEST MARKETING,
ENGAGEMENT & VISIBILITY**

Summit sponsors get exclusive signage, marketing, and top-tier recognition opportunities.



Promote on MTG Platform
10,000+
AEC Professionals



Drive Brand Awareness
32,000+
Video Downloads



Attract Future Customers
1.5 Million
Post Views



SOLD OUT

Watch Video

YOUR LOGO GO HERE

YOUR LOGO GO HERE

REGISTRATION
Last Name
L-Z

REGISTRATION
Last Name
A-K

All-Access Passes

YOUR AD HERE
Have a tagline?

YOUR LOGO HERE

YOUR AD HERE
Have a tagline?

YOUR LOGO HERE

- Our Services:
- Architecture
- Engineering
- Installation
- Mass Timber

- Architecture
- Engineering
- Installation
- Mass Timber

123-456-7890 www.reallygreatsite.com

MASS TIMBER GROUP
S U M M I T



MAGAZINE	Logo on Sponsor Thank You Page	\$250	\$250	\$250	\$250
	Magazine Full Color Ads	2-Page \$1,000	2-Page \$1,000	1-Page \$500	
	Front Cover Logo Featured	\$1,000			
	1st Ad Placement	\$250			
NEWSLETTER	Logo Featured in Newsletters	\$500	\$500	\$500	\$500
	Mass Timber Project Spotlight	2 - \$1,500	2 - \$1,500	\$750	
	Special Announcements	1 - \$350	1 - \$350		
SUMMIT BENEFITS	Full Summit Passes Comped	5 - \$4,000	3 - \$4,000	2 - \$4,000	1 - \$4,000
	30% OFF Team & Guest Passes	\$1,000	\$1,500	\$1,000	\$1,000
	Access to Private Sponsor Room	\$1,000	\$1,000	\$1,000	\$1,000
	Custom Marketing Highlight Video	2 - \$4,000	\$2,000	\$2,000	\$2,000
	Exhibitor Space	FREE \$4,000	FREE \$4,000	\$2,000	\$2,000
	Professional Photographer Access	\$1,500	\$1,500	\$1,500	\$1,500
	Summit Digital Video Feature	\$2,000	\$2,000	\$2,000	\$2,000
	Limousine for After Parties - Both Days	\$1,500	\$1,500	\$1,500	\$1,500
BRAND + DIGITAL	Website Sponsor List	\$250	\$250	\$250	\$250
	Shared Summit Sponsor Logo Banners	\$500	\$500	\$500	\$500
	Exhibit Hall Floor Signs	\$500	\$500	\$500	\$500
	Logo in Summit Digital Video	\$500	\$500	\$500	\$500
	Main Entrance Sponsor Recognition	\$1,000	\$1,000	\$1,000	\$1,000
	Handout at Registration	\$500	\$500	\$500	\$500
	Summit Attendee Email Opportunity	\$1,000	\$1,000	\$1,000	\$1,000
	Sponsored Summit Giveaway*	\$500	\$500	\$500	\$500
	Stand-Alone Logo at Main Entrance	\$2,000	\$2,000	\$2,000	\$2,000
	Sponsored & Branded Lunch Hours	\$4,000	\$4,000	\$4,000	\$4,000
	Website Homepage Feature	\$2,000	\$2,000	\$2,000	\$2,000
	Branded Signage at Registration	\$1,500	\$1,500	\$1,500	\$1,500
	Exclusive Mobile App Branding	\$3,000	\$3,000	\$3,000	\$3,000
PRE-EVENT MARKETING	Website Logo & Link to Website	\$500	\$500	\$500	\$500
	MTG Show YouTube Podcast	\$750	\$750	\$750	\$750
	Featured Article on LinkedIn + Website	3 - \$1,500	2 - \$1,000	1 - \$500	1 - \$500
	LinkedIn Recognition Spotlight Posts	3 - \$750	3 - \$750	2 - \$500	1 - \$250
	3 Custom Media Coverage Campaigns	\$3,000	\$3,000	\$3,000	\$3,000
COST	FULL RETAIL COST	\$47,600	\$26,750	\$16,100	\$13,100
	2025 SUMMIT PRICE	\$24,995	\$15,995	\$7,995	\$5,995
	TOTAL AVAILABLE	1	2	5	6

100 SPOTS SOLD

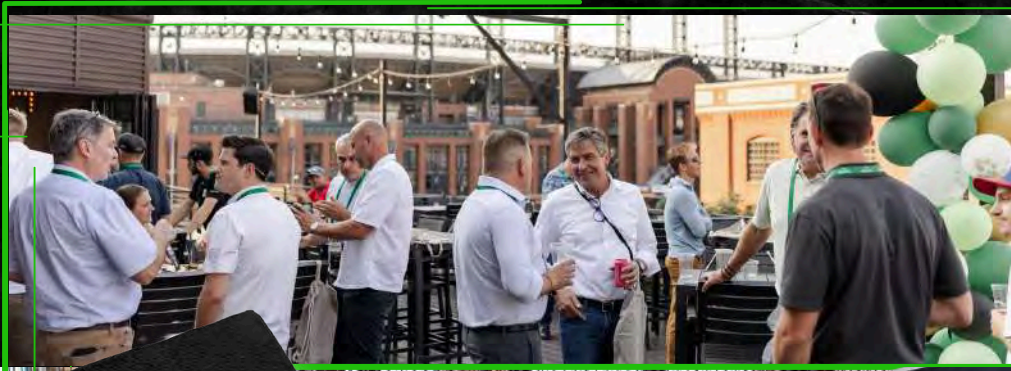
MASS TIMBER
TITAN





MASS TIMBER GROUP SUMMIT

NETWORKING



Home Run Social

1 Rockies vs Dodgers @ Coors Field

Kick Off Event & Check-In
Jack Daniel's Rooftop Deck
Seat + Food + Drink
Cash Bar



Click [HERE](#) for 360 View

8/20

2 Magic Mixer

Denver Art Museum

Most Attended Event
Live Magicians
Hors d'oeuvres
Cash Bar
\$5,995



8/21



- ✓ Exclusive Branding
- ✓ Branded Tableware
- ✓ Giveaway Opportunity
- ✓ Talk to Attendees at Event
- ✓ Branded Specialty Cocktail
- ✓ Website Logo & Recognition
- ✓ Website Networking Sponsor
- ✓ Summit Magazine Promotion
- ✓ Welcome Recognition by Hosts
- ✓ Networking Digital Video Feature
- ✓ Custom Highlight/Marketing Video
- ✓ 30% Off All Summit Passes

3 Closing Concert Party

Denver Art Museum

Celebratory Party
Hors d'oeuvres
Hosted Bar
\$5,995
8/22





MASS TIMBER GROUP
S U M M I T

TRACK & SESSION SPONSORS

- ✓ Custom Branding
- ✓ Logo on Lectern/Stage
- ✓ Logo on Agenda Banners
- ✓ Website Logo & Recognition
- ✓ Direct Attendee Interaction
- ✓ Showcase Company Expertise
- ✓ Summit Magazine Recognition
- ✓ Pre-Session Digital Video Feature

3-TRACK SPONSOR
\$5,995 *1 Available*



KEYNOTE SPONSOR
\$3,995 *1 Available*



- ✓ Handouts in Rooms
- ✓ Listed Sponsor on Website
- ✓ 30% Off All Summit Passes

MASTERMIND PANEL SPONSOR





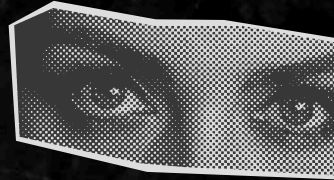
MASS TIMBER GROUP
S U M M I T

COFFEE BREAK SPONSOR

Always be in the spotlight.
Get into the hands of every
coffee-loving attendee.

- ✓ All-Day Coffee Bar
- ✓ Exclusive Branding
- ✓ Coffee Station Banners
- ✓ 2 Morning Break Sessions
- ✓ Website Logo & Recognition
- ✓ Custom Cups, Lids & Napkins
- ✓ Summit Magazine Recognition
- ✓ 30% Off All Summit Passes

YOUR
COMPANY
COLORS



YOUR
LOGO



MASS TIMBER GROUP
S U M M I T

\$4,995
1 Available





MASS TIMBER GROUP
S U M M I T

LANYARD SPONSOR

YOUR LOGO HERE



ALL EYES ON YOU



- ✓ Exclusive Lanyard Branding
- ✓ Website Logo & Recognition
- ✓ Summit Magazine Recognition
- ✓ 30% Off All Summit Passes

Make YOUR COMPANY stand out in every interaction, every photo and every video. Media produced by the MTG team is published across our 10,000 + member community.





MASS TIMBER GROUP
S U M M I T

LOUNGE & BREAK SPONSOR

STAND OUT WHERE CONVERSATIONS HAPPEN

All-day lounge & water station + 1-hour afternoon break session with snack bar scheduled both days.

- ✓ Custom Lounge Logo + Branding
- ✓ Summit Magazine Recognition
- ✓ Lounge Recognition Banners
- ✓ Website Logo & Recognition
- ✓ Distribute Printed Material
- ✓ Exclusive Branding
- ✓ 30% Off All Summit Passes

\$4,995
1 Available



YOUR LOGO





MASS TIMBER GROUP
S U M M I T

MORE WAYS TO STAND OUT

SIGNAGE & DIGITAL

YOUR IMAGE OR VIDEO HERE

LED FLOOR SCREENS 25" X 80"

Show any photo or video in shared 30-second rotations on high-def LED floor screens in the exhibitor hall.

\$495/ASSET (SHARED)
\$2,495/EXCLUSIVE USE

VIDEO FEATURE

Shared 30-second rotations on presentation screens at the Summit (exhibit hall, networking events).

\$1,995/ASSET

[CLICK TO WATCH!](#)

PODCAST SPONSOR



EXCLUSIVE BRANDING

Over 15,000 annual downloads - put your company & message in front of the highest-engaged, fastest growing Mass Timber audience in the industry.



\$4,995/QUARTER
\$11,995/YEAR



SUMMIT MAGAZINE

Includes Website Recognition

Features Mass Timber projects, the Summit agenda, session details + so much more. **Available in digital format on the website with over 7,000 visitors last year.**

BACK COVER

\$1,995, EXCLUSIVE

INSIDE PAGES

\$495/PAGE





SPONSORSHIP AGREEMENT

2025 Mass Timber Group Summit | Denver, CO | Aug 20-22, 2025

Mass Timber Group, LLC, 2104 27th Avenue, Missoula, MT 59804
 Phone: (406) 396-3941 | Email: brady@masstimber.group | www.masstimber.group

CONTACT INFORMATION:

COMPANY NAME: _____ EMAIL: _____
 PRIMARY CONTACT NAME: _____ BILLING EMAIL (if different): _____
 DIRECT PHONE: _____ MOBILE PHONE: _____
 ADDRESS: _____ STATE/COUNTRY: _____ ZIP CODE: _____
 CITY: _____
 COMPANY URL: _____
 SOCIAL MEDIA HANDLES: X: _____ LINKEDIN: _____
 SPONSORSHIP(S) SELECTED: _____
 SPONSORSHIP SUBTOTAL: _____
 ADD-ON BRANDING SELECTED: _____
 ADD-ON BRANDING SUBTOTAL: _____
 EXHIBITOR BOOTH NUMBER: _____
 EXHIBITOR BOOTH PRICE: _____
TOTAL COST: _____

RESERVING MORE THAN ONE SPONSORSHIP?

Take advantage of the discounted ADD-ON RATES.
 20% Discount applied to any additional, lower priced sponsorships/add-ons.

RESERVE NOW AND SAVE \$1,000!

Select your sponsorship by November 30, 2025, to lock in these early bird rates (exp 1/31/25).
 50% deposit required with reservation.
 Final balance due January 31, 2025.

SELECT YOUR SPONSORSHIPS BELOW:

Note: All Sponsors and Exhibitors are subject to Mass Timber Group, LLCs approval.

MAIN EVENT SPONSORS

	TOTAL AVAILABLE 1	\$24,995
	2	SOLD
	5	SOLD
	6	SOLD

All events and branding opportunities are subject to change.

SPONSORSHIPS ARE LIMITED, CALL TODAY!
 CONTACT NIC WILSON | NIC@MASSTIMBER.GROUP | +1 406-240-4742

SPECIAL EVENTS & EDUCATION SPONSORS

	TOTAL AVAILABLE	PRICE
DAY 1 NETWORKING EVENT SPONSOR HOME RUN MIXER ROCKIES VS. Dodgers @ Coors Field	1	SOLD
DAY 2 NETWORKING EVENT SPONSOR MASS TIMBER MAGIC MIXER DENVER ART MUSEUM	1	\$5,995
DAY 3 NETWORKING EVENT SPONSOR SUMMIT CLOSING PARTY DENVER ART MUSEUM	1	\$5,995
3-TRACK SPONSOR	1	\$5,995
KEYNOTE SPONSOR	1	\$3,995
MASTERMIND PANELS SPONSOR	1	SOLD

BREAK & BRANDING SPONSORS

	TOTAL AVAILABLE	PRICE
COFFEE & MORNING BREAK SPONSOR	1	\$4,995
LOUNGE & AFTERNOON BREAK SPONSOR	1	\$4,995
LANYARD SPONSOR	1	SOLD

BRANDING ADD-ONS

	TOTAL AVAILABLE	PRICE	QUANTITY
25" X 80" LED FLOOR SCREEN SHARED ROTATING AD (Video or Image)	19/20	\$495	
EXCLUSIVE USE: 25" X 80" LED FLOOR SCREEN (Video or Image)	2/3	\$2,495	
SUMMIT MAGEZINE BACK COVER	1	\$1,995	
SUMMIT MAGEZINE AD PLACEMENT	10 Pages	\$495/Page	
SUMMIT SHARED ROTATING DIGITAL VIDEO FEATURE	3	\$1,995	
MASS TIMBER GROUP SHOW PODCAST SPONSORSHIP	4	\$4,995/Quarter*	

*\$7,985 Discount if Sponsor reserves for a full year (\$11,995 Total)

Don't Forget to Input Quantities

EXHIBITOR SPACES

	TOTAL AVAILABLE	PRICE	NUMBER	QUANTITY
8' x 8' EXHIBITOR SPACE (#'s 1-8, 10-11, 13-16, 18-21)	2	\$4,750		1
10' x 10' EXHIBITOR SPACE (#'s 22-29)	2	\$5,250		1
*8' X 16' EXHIBITOR SPACE (#'s 9, 12, 17)	1	N/A		1

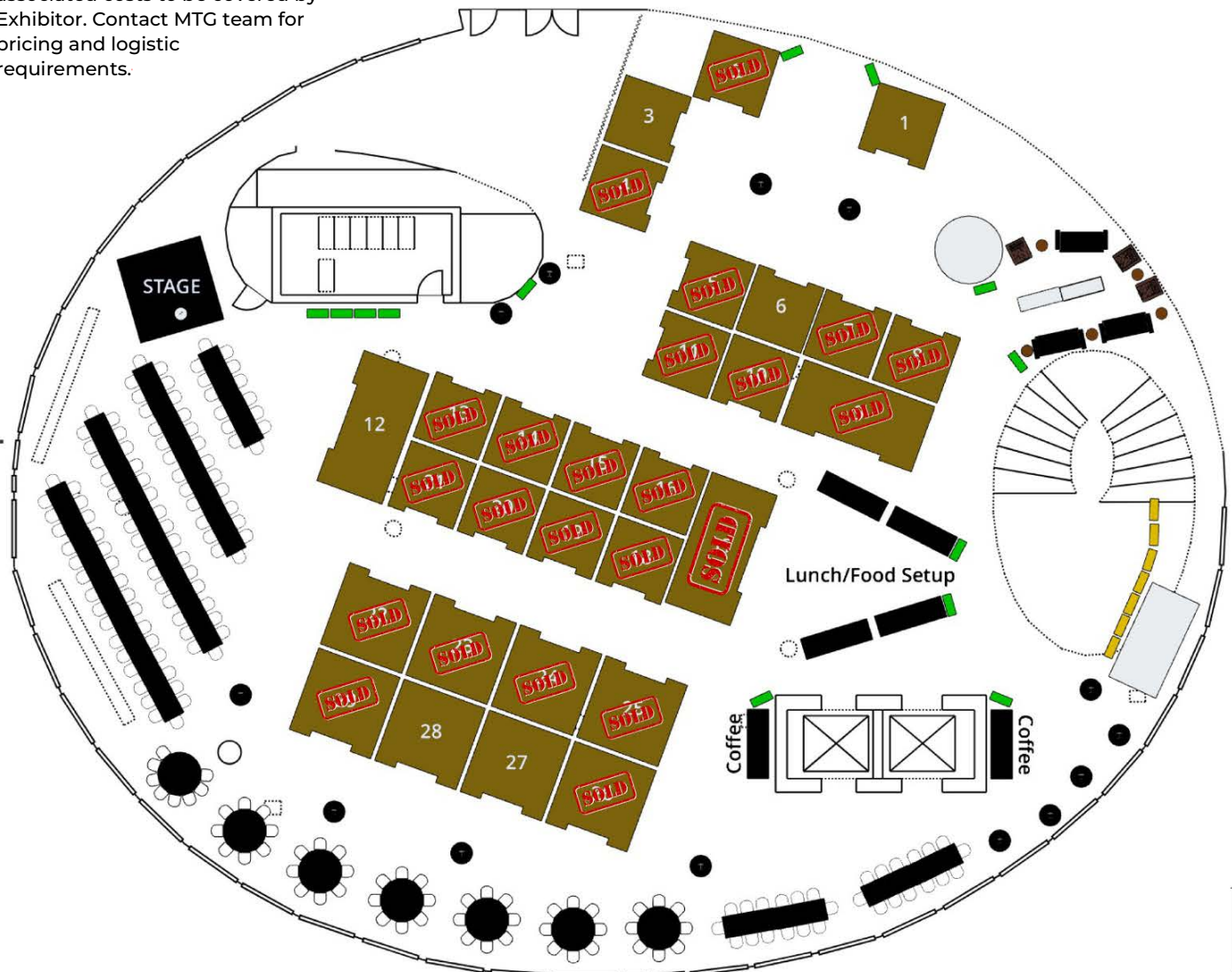
*8' X 16' Exhibit Spaces are reserved for the Mass Timber Titan and Carbon Champion Main Event Sponsors and are included in their sponsorship.

EXHIBITOR DETAILS:

[CLICK HERE FOR 3D VIEW](#)

All exhibitors are subject to Mass Timber Group approval to ensure appropriate fit with event, industry and attendee benefit.

- All Exhibit Spaces include two (2) All-Access Summit Passes. Additional passes are available at a 30% discount.
- Green Steward and Timber Trailblazer Main Event Sponsors enjoy a 50% discount on the listed prices.
- Exhibit Spaces are reserved on a first-come, first-served basis. Layout subject to minor changes. MTG will communicate promptly if any changes impact the selected Exhibit Spaces.
- Exhibit Setup Time is on Wednesday, Aug 20, 2025 from 12-4 PM. Tear Down is on Friday, Aug 22, 2025 from 4-6 PM.
- **Exhibit Restrictions:** No Plant or Floral Materials/Green Wood, External Food Items, Dirt, Sand, Leaves, Grasses, Water Features. No tape or wire can be affixed to the walls or other surfaces of the Museum. Decorating materials which are NOT allowed include glitter, streamers, confetti, shredded fabric or balloons. No cutting of wood. Power available, Exhibitor must bring their own 25' extension cord.
- **Materials Shipping:** Available upon request and associated costs to be covered by Exhibitor. Contact MTG team for pricing and logistic requirements.



All events and branding opportunities are subject to change.

SPONSORSHIPS ARE LIMITED, CALL TODAY!
CONTACT NIC WILSON | NIC@MASSTIMBER.GROUP | +1 406-240-4742

PAYMENT OPTIONS:

50% Deposit due with agreement. Remaining balance due by January 31, 2025. Flexible payment plans available upon request. Select your sponsorships and make full payment by January 31, 2025 to lock in early bird rates. Sponsorships reserved or payments received after January 31, 2025 are subject to an additional fee of \$1,000.

INVOICE ME.

PAY BY CREDIT CARD. MTG will provide a digital link. 4% processing fee added.

PAY BY CHECK.

I will mail a check in the amount of US \$
Please make checks payable to: Mass Timber Group, LLC
Send to:

Mass Timber Group, LLC
2104 27th Avenue
Missoula, MT 59804

***PAY BY WIRE TRANSFER:**

I will wire transfer in the amount of US
Send to:

First Security Bank of Missoula, Division of Glacier Bank
1704 Dearborn Avenue
Missoula, MT 59801

SWIFT Code (if needed): FSBAUS44

Routing Number: 092901337

Account Number: 2200005075080

Payable To: Mass Timber Group, LLC

***PAY BY ACH TRANSFER (FROM USA ACCOUNTS ONLY)**

I will ACH transfer in the amount of US

First Security Bank of Missoula, Division of Glacier Bank
1704 Dearborn Avenue
Missoula, MT 59801

Routing Number: 092901337

Account Number: 2200005075080

Payable To: Mass Timber Group, LLC

***Please make sure to identify yourself by Company Name**



SPONSORSHIP AGREEMENT

2025 Mass Timber Group Summit | Denver, CO | Aug 20-22,, 2025

Mass Timber Group, LLC, 2104 27th Avenue, Missoula, MT 59804
Phone: (406) 396-3941 | Email: brady@masstimber.group | www.masstimber.group

- 1. Signing this Agreement indicates firm commitment (non-cancelable) of the above sponsorship(s), exhibitor space(s) and/or advertisement(s) for the 2025 Mass Timber Group Summit (2025 MTG Summit), in accordance with the corresponding rate card fees. A faxed, signed Agreement is also binding.**
2. Mass Timber Group, LLC (“MTG”) and the sponsor or exhibitor named above (“Sponsor”) agree that the activities contemplated by this Agreement have a specific and limited scope. Nothing in this Agreement should be construed to imply or convey Mass Timber Group, LLC’s approval, endorsement, certification, acceptance, or referral of any Sponsor product or service. According to the sponsorship selected, Mass Timber Group, LLC will provide appropriate acknowledgment and recognition of the Sponsor in accordance with applicable laws. All advertising, media, content and/or materials (“Sponsor Content”) distributed by or on behalf of Sponsor must comply with (i) Mass Timber Group, LLC’s advertising policies and procedures as determined from time to time by Mass Timber Group, LLC and (ii) Mass Timber Group, LLC’s Intellectual Property Enforcement Policy (see item 7).

Subject to the terms and conditions of this Agreement, the Sponsor grants MTG the right to use the Sponsor's trade names, logo designs, trademarks, and company descriptions. These assets may be used in any medium of advertising, promotional products, or marketing materials distributed solely in connection with the 2025 MTG Summit, and any future MTG Summit related promotions that reference the 2025 MTG Summit and the Sponsor’s involvement, the Mass Timber Group Show, Mass Timber Group, LLC media outlets, to include social media. MTG agrees to use materials according to Sponsor's trademark usage guidelines.

3. Sponsor agrees to indemnify and hold harmless Mass Timber Group, LLC, its officers, directors, employees, and agents, from any and all claims, losses, damages, liabilities, judgments, or settlements, including reasonable attorneys’ fees, costs, and other expenses, incurred in any way in connection with Sponsor’s acts, omissions, or breach of this Agreement, or any actions or claims made by Sponsor, or any third party against Sponsor, under Mass Timber Group, LLC’s Intellectual Property Enforcement Policy (see item 7).

The Sponsor will indemnify, defend, and hold MTG harmless from and against any claims relating directly or indirectly to, or arising out of, content posted on the Sponsor's respective website, social media, event, use of Sponsor materials, or use of Sponsor's logos and trademarks.

MTG will not be responsible for damage to or loss of property belonging to the Sponsor, its employees, contractors, or agents or for personal injury to the Sponsor's employees, contractors, agents, directors, or invitees except to the extent that claims may be solely and directly attributed to willful misconduct or gross negligence of MTG and MTG’s employers, directors, or officers.

Sponsor will give MTG prompt written notice of any suit or claim that comes within the purview of these indemnities.

4. Sponsor warrants and represents that any Sponsor Content provided or distributed by Sponsor under this Agreement will comply with (i) Mass Timber Group, LLC’s advertising policies and procedures as determined from time to time by Mass Timber Group, LLC and (ii) Mass Timber Group, LLC’s Intellectual Property Enforcement Policy (see item 7). Further, Sponsor warrants and represents that any Sponsor Content that it distributes at or in correlation with 2025 MTG Summit (or any other Mass Timber Group, LLC show) will not violate applicable laws or any proprietary rights of others (including, without limitation, any copyrights, trademarks, publicity rights, or patents) and that such Sponsor Content is owned and/or lawfully distributed by Sponsor. In addition, Sponsor warrants that it will not make any claims under this Agreement (e.g., under the Intellectual Property Enforcement Policy at item 7) that are not substantiated or that are prohibited by law.

5. Sponsor acknowledges and agrees that Mass Timber Group, LLC may terminate the Agreement at any time for any reason in its sole discretion. Upon termination by Mass Timber Group, LLC of the Agreement, Mass Timber Group, LLC shall refund any sponsorship fees received by Mass Timber Group, LLC prior to termination, minus any fees for services or benefits already provided.

The Sponsor may terminate this Agreement for breach of Agreement by MTG after giving MTG at least ten (10) days prior written notice specifying the nature of the breach and giving MTG at least ten (10) days to resolve such breach. If breach occurs less than ten (10) days before the event, Sponsor may terminate this Agreement if breach is not resolved by the first day of the event.

6. Each of Mass Timber Group, LLC and Sponsor shall be liable should it default or breach this Agreement. In addition, any third-party agency signing on behalf of the Sponsor will be held responsible for the fulfillment of this noncancelable contract.
7. Mass Timber Group, LLC does not support and does not wish to enable the infringement of any of its partners' (that term is used herein to encompass any sponsor or exhibitor, whether or not a member of Mass Timber Group, LLC) intellectual property. Mass Timber Group, LLC has developed this Intellectual Property Enforcement Policy as a means to educate its partners on intellectual property, and to afford some protections and recourse for disputes. As part of this Intellectual Property Enforcement Policy, Mass Timber Group, LLC will work with its partners to ensure that its partners' rights are protected, maintained and managed properly. As such, Mass Timber Group, LLC may approach Sponsor to request proof that any of the Sponsor Content that Sponsor uses, distributes or publishes is lawfully owned or displayed. Mass Timber Group, LLC also reserves the right to request information from Sponsor in response to a potential complaint from another member.
8. Sponsor hereby agrees that the exclusive jurisdiction for any dispute, claim, or demand related in any way to the enforcement or construction of this Agreement will be decided by binding arbitration in the State of Montana, USA. Specifically, all disputes between Sponsor and Mass Timber Group, LLC shall be subject to the rules and laws then in effect in Montana, and settled before one arbitrator to be mutually agreed upon by both parties. The parties agree to share equally in the arbitration costs incurred. It is the intention of the parties that all questions with respect to the construction and enforcement of this Agreement and the rights and liabilities of the parties hereto shall be determined in accordance with the laws of the State of Montana, USA.
9. Sponsor agrees that Mass Timber Group, LLC's liability (if any) on account of omissions, errors or any breach, injury or claim related to this Agreement shall be discharged by abatement of the charges or a sponsorship/ advertising allowance commensurate with the error for the particular sponsorship or advertisement in which the omission or error occurred, but in no event exceeding the contract price of the particular sponsorship or advertisement in which the omission or error occurred. No adjustment is applicable to any free sponsorship or advertisement. Reproduction quality of photographs or artwork provided cannot be guaranteed.

In no event shall either party be liable to the other party for any consequential, incidental, indirect, or punitive damages regardless of whether such liability results from breach of contract, breach of warranties, tort, strict liability, or otherwise.

10. Sponsor agrees and acknowledges that any data other than Personal Data, which Mass Timber Group, LLC has obtained from Sponsor, may be freely shared with and transferred to Mass Timber Group, LLC and Mass Timber Group, LLC's affiliates and any third party for commercial purposes unless Sponsor has specified to the contrary in writing stating what data may not be so shared or transferred.
11. It is mutually agreed that, in the event that 2025 MTG Summit is canceled for any reason, then and thereupon this Agreement will be automatically terminated and Mass Timber Group, LLC management will determine an equitable basis for the refund of a portion or all of the sponsorship fees received by Mass Timber Group, LLC prior to termination, after due consideration of expenditures and commitments already made. Mass Timber Group, LLC may postpone 2025 MTG Summit or decide to hold all or any part of 2025 MTG Summit virtually for any reason, and

Sponsor acknowledges and agrees that in such an event, the Agreement shall remain in full force and effect for the virtual event or for the new MTG Summit dates, which may or may not be in the calendar year 2025. The parties acknowledge and agree that Mass Timber Group, LLC shall not be in breach of this Agreement by virtue of the cancellation or postponement of 2025 MTG Summit, or the decision to hold all or any part of 2025 MTG Summit virtually.

ACCEPTANCE

Please sign and email to Brady Potts at brady@masstimber.group or Nic Wilson at nic@masstimber.group
Questions? Please call 406-396-3941 (Brady) or 406-240-4742 (Nic).

By signing below, I acknowledge that I have read and agree to the terms as set forth above, and I am authorized to sign on behalf of my company/organization.

PRINT NAME:

DATE:

SIGNATURE:

Type your name here to sign